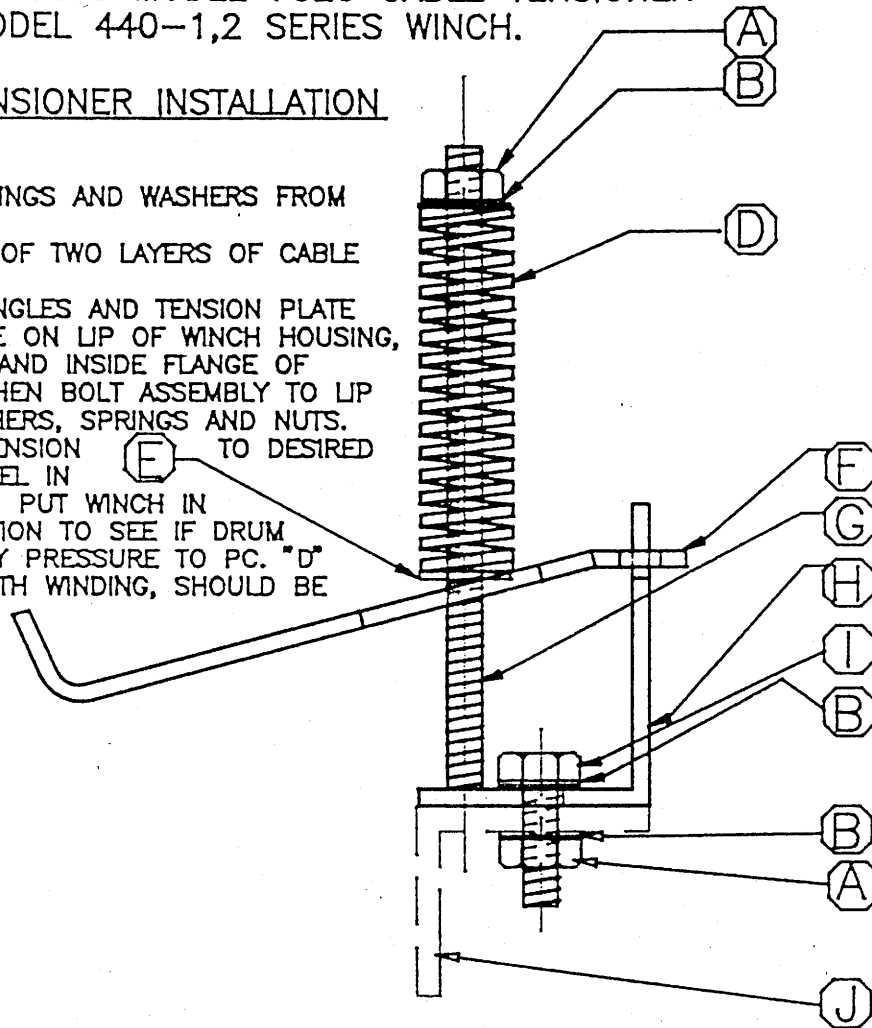


DIVERSIFIED PRODUCTS MODEL 7020 CABLE TENSIONER  
FOR HOLMES MODEL 440-1,2 SERIES WINCH.

7020 CABLE TENSIONER INSTALLATION  
INSTRUCTIONS.

- 1: REMOVE NUTS, SPRINGS AND WASHERS FROM ASSEMBLY.
- 2: REEL OFF A MIN. OF TWO LAYERS OF CABLE FROM WINCH.
- 3: WITH MOUNTING ANGLES AND TENSION PLATE ASSEMBLED, PLACE ON LIP OF WINCH HOUSING, DIRECTLY BEHIND AND INSIDE FLANGE OF WINCH SPOOL. THEN BOLT ASSEMBLY TO LIP AND INSTALL WASHERS, SPRINGS AND NUTS.
- 4: ADJUST SPRING TENSION (E) TO DESIRED PRESSURE AND REEL IN CABLE ON WINCH. PUT WINCH IN FREE SPOOL POSITION TO SEE IF DRUM OVER-RUNS. APPLY PRESSURE TO PC. "D" EVENLY FOR SMOOTH WINDING, SHOULD BE ABLE TO FREE-WHEEL UNDER TENSION.



LEGEND:

- A: X-221
- B: X-315
- D: 149
- E: X-328
- F: 7025
- G: 148
- H: 7023
- I: X-092
- J: EXISTING MOUNT



DIVERSIFIED PRODUCTS MANUFACTURING

8330 ATLANTIC BLVD. JAX. FL. 32211  
1-800-874-4172 FAX (904) 724-4494

9-17-91