


TB-6800/6900 Series Medium Duty Truck Bars

Pushbumper.com



Commercial Truck and Towing Accessories

Item #	Part #	Description
1)	TB-6819-3	Arm Assembly Complete
1a)	TS-6415PA TS-6415DA TB-6819-4	Angled Arm Assembly Complete (passenger side) Angled Arm Assembly Complete (drivers side, not shown) XL Arm Assembly Complete (not shown)
2a)	TB-6650	2-Way Hinge w/Offset (3/4" pin, 3/4" bolt, 3 1/4" Center-to-center)
2b)	TB-6650S	2-Way Hinge, (3/4" pin, 3/4" bolt, 1 1/2" Center-to-center) <u>USED ON TB-6800-26</u>
2c)	TB-6660	2-Way Hinge w/Offset (3/4" pin, 3/4" bolt, 3 1/4" Center-to-center) w/grease set <u>USED ON TB-6900-3</u>
	TS-6497	2-Way Hinge, (3/4" pin, 3/4" bolt, 3 1/4" Center-to-center, 3 3/4" wide) <u>USED ON TB-6800-5</u>
	TS-6486	2-Way Hinge, w/Offset (5/8" pin, 3/4" bolt, 3 1/2" Center-to-center, <u>USED ON TB-6800-4 & TB-6900-2</u>
3)	TS-343	Spring (zp)
4)	TB-6604	Swivel Strap
5)	TB-6809H	Pivot Weldment (w/arm hardware)
6)	X-559	Anchor Shackles, 3/4" (galvanized)
7)	TB-6804	Lower Bar Weldment (w/7/16" G70 Hooks)
8)	X-382	Lower Bar Weldment (w/7/16" G43 Hooks)
9)	X-380	3/4"x5 1/2" Clevis Pin (zp)
10)	X-358	5/8"x5 1/2" Clevis Pin (zp)
	TB-1	Safety Pin (zp)
	TB-2	4 Rubber Ring Kit (4" ID w/Dowel Pins)
	X-460-1	2 Rubber Ring Kit (4" ID w/Dowel Pins)
	X-047	Single Rubber Ring (6"od X4"ID X1.25")
	TB-6060-1	Hex Bolt, 3/4"x3" (zp)
	TB-643	Corner Mount Bolt-on Bracket Kit
	TB-6065	Old-style Weld-on Bracket Kit
	X-409	Corner Mount Weld-on Bracket Kit
	TS-6425	Roll Pin, 5/32"x 1 1/8" (zp)
	TS-6424	1" Camlock Handle
	X-235	1" Camlock Plunger
		Nylock Nut, 3/4" (zp)

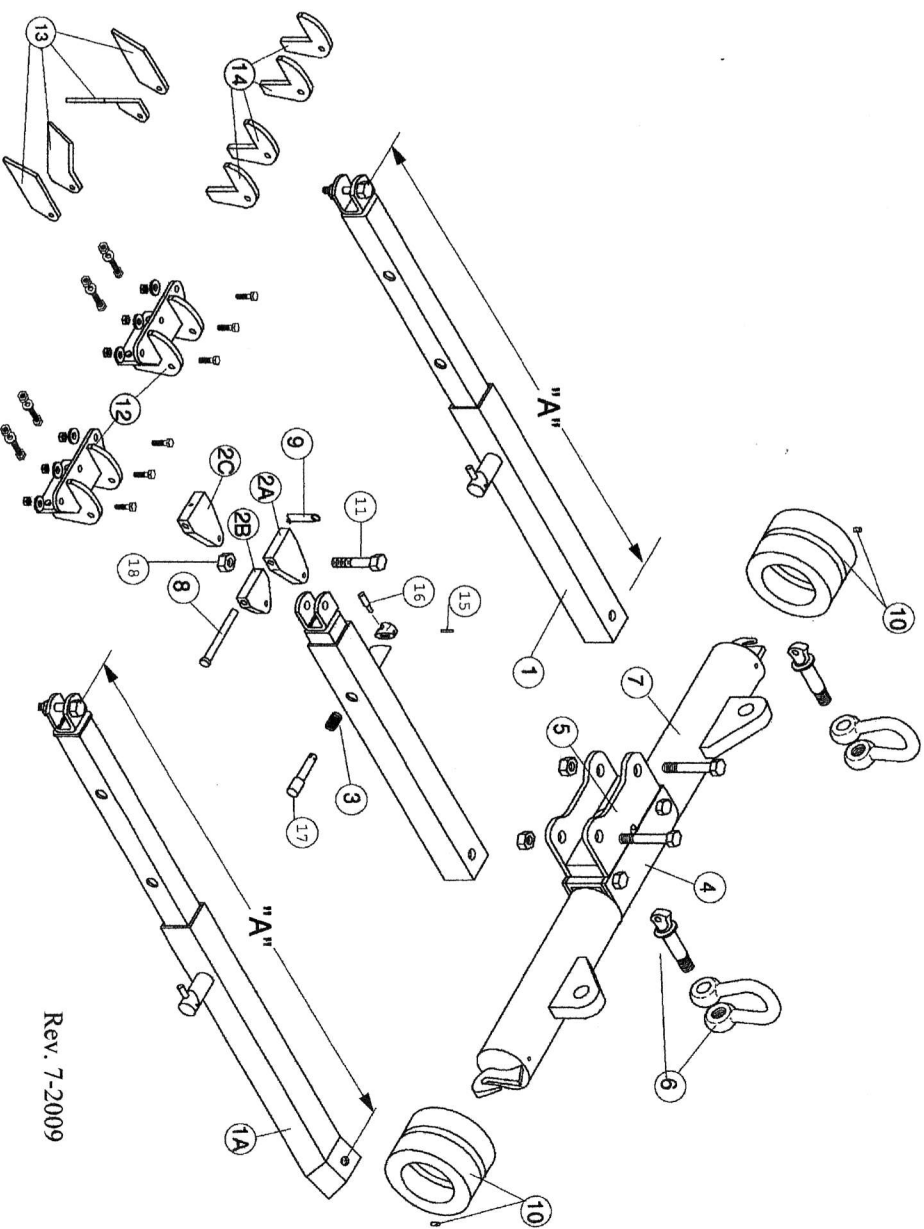
Also Available: TS-6423A 1" Camlock Assembly Complete

and X-460 Single Rubber Ring (6"od X3.5"ID X1.25")

Arm Dimension "A"	#1	#1A	TB-6819-4 (not shown)
Short-Locked Position	28.5"	29.5"	32.5"
Mid-Locked Position	35"	38"	38.5"
Full Extension (unlocked)	45"	47"	48.5"

Diversified Products Mfg.

8330 Atlantic Blvd, Jacksonville FL 32211
800-874-4172, 904-724-0310, Fax 904-724-4494



Rev. 7-2009