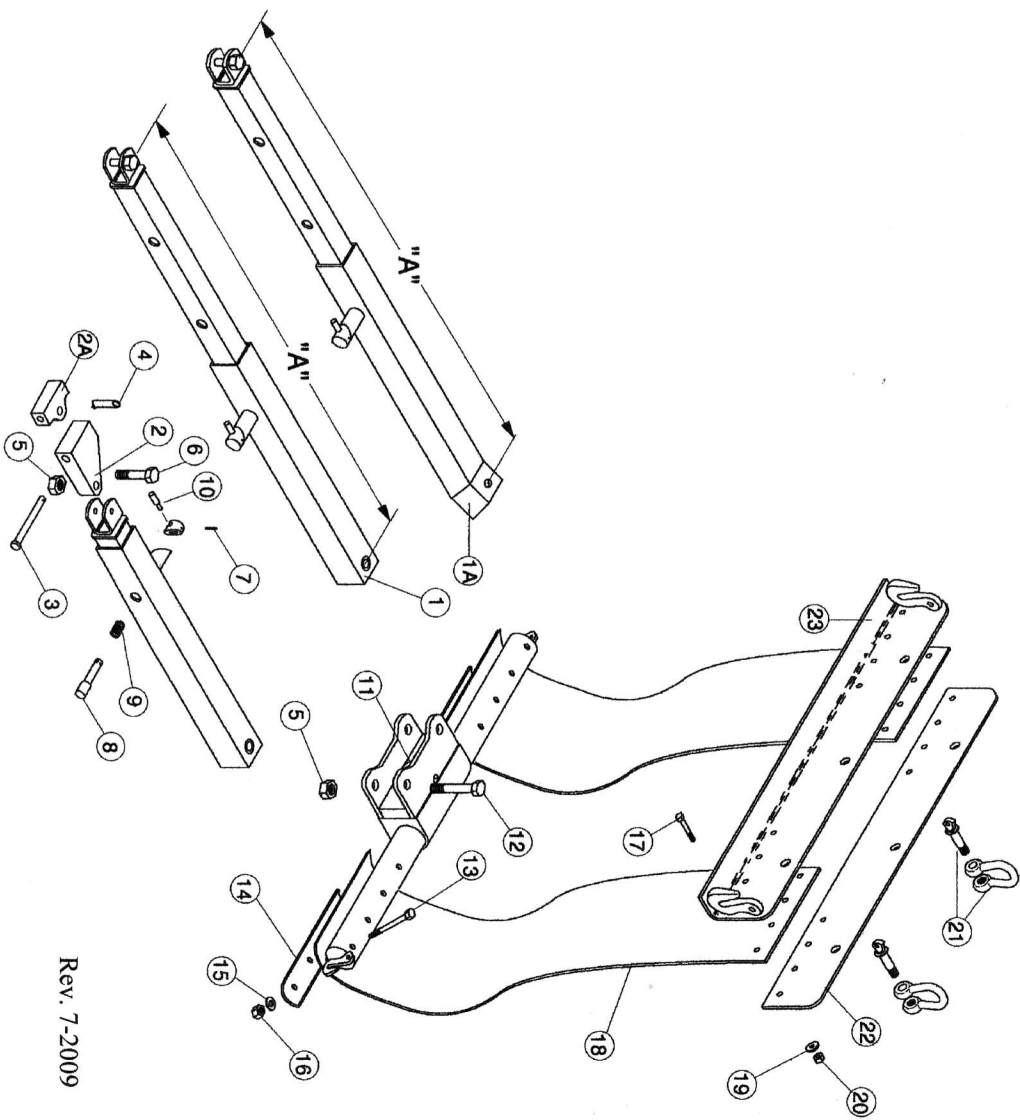


# TS-64 Series Heavy Duty Tow Slings

Item #	Part #	Description
1)	TB-6819-3	Sling Arm Assembly Complete
1a)	TS-6415PA TS-6415DA TB-6819-4	Angled Sling Arm Assembly Complete (passenger side) Angled Sling Arm Assembly Complete (drivers side, not shown) XL Sling Arm Assembly Complete (not shown)
2)	TS-6486	2-Way Hinge w/Offset (5/8" pin, 3/4" bolt, 3 1/4" Center-to-center)
2a)	TS-6496 TS-6497 TS-6498A	2-Way Hinge, (5/8" pin, 3/4" bolt, 15/16" Center-to-center) <u>USED ONLY ON TS-64-1</u> 2-Way Hinge, (3/4" pin, 3/4" bolt, 3 1/2" Center-to-center, 3 3/4" wide) <u>USED ONLY ON TS-64-6</u> 2-Way Hinge, (3/4" pin, 3/4" bolt, 1" Center-to-center) <u>USED ONLY ON TS-64-8</u> 5/8"x5 1/2" Clevis Pin (zp) <u>must match pin hole size on 2-way hinge</u> 3/4"x5 1/2" Clevis Pin (zp) <u>must match pin hole size on 2-way hinge</u>
3)	X-380 X-382	Safety Pin (zp)
4)	X-358	Nylock Nut, 3/4" (zp)
5)	X-235	Hex Bolt, 3/4"x3" (zp)
6)	X-047	Roll Pin, 5/32"x 1 1/8" (zp)
7)	X-409	1" Camlock Plunger
8)	TS-6424	Spring (zp)
9)	TS-343	1" Camlock Handle
10)	TS-6425	Lower Bar/Pivot Assembly (w/Pivot Hardware)
11)	TS-6490H	Hex Bolt, 3/4x4 1/2" (zp)
12)	X-052	Hex Bolt, 3/8"x4" (zp)
13)	X-022	Sling Belting Clamp
14)	TS-6494	Flat Washer, 3/8" (zp)
15)	X-315	2-way Locknut, 3/8" (zp)
16)	X-221	Hex Bolt, 5/16"x1 1/2" Gr. 8 (zp)
17)	X-014	HD Sling Belt
18)	TS-6013XHP	Flat Washer, 5/16" (zp)
19)	X-310	Nylock Nut, 5/16" (zp)
20)	X-215	Anchor Shackles, 3/4" (galvanized)
21)	X-559	Front Sling Belting Plate
22)	TS-6412	Back Sling Belting Plate
23)	TS-6410	

Also Available: TS-6423A 1" Camlock Assembly Complete

Arm Dimension "A"	#1	#1A	TB-6819-4 (not shown)
Short-Locked Position	28.5"	29.5"	32.5"
Mid-Locked Position	35"	38"	38.5"
Full Extension (unlocked)	45"	47"	48.5"



**Pushbumper.com**

Commercial Truck and Towing Accessories

## Diversified Products Mfg.

8330 Atlantic Blvd, Jacksonville FL 32211  
800-874-4172, 904-724-0310, Fax 904-724-4494